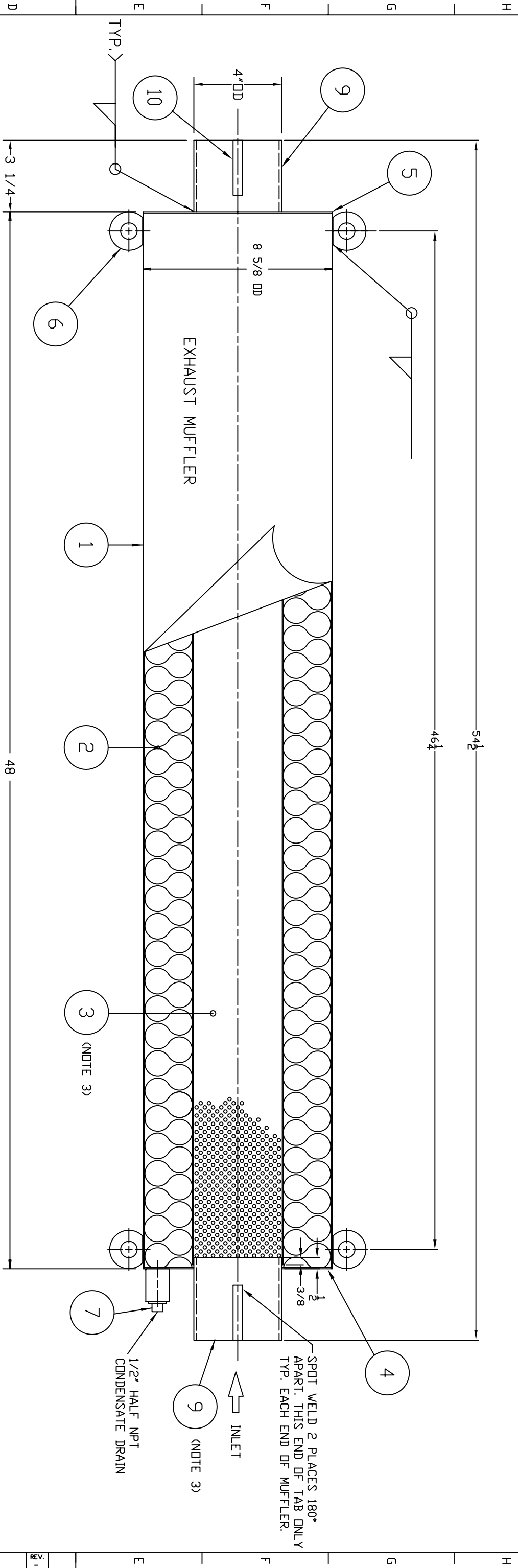


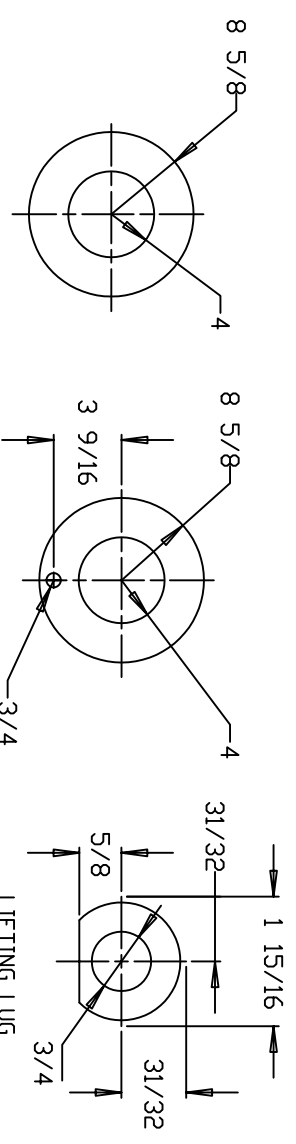
REV	DESCRIPTION	CHECKED / DATE	APPROVAL / DATE
C	ADDED NOTE 3 & DIMENSIONS S.D.R. 7-21-04		



ITEM	COMPONENT P/N	DESCRIPTION	UOM
1	5-10-002750	8" SCH 5 PIPE EXTERIOR JACKET	1 EA
2	2-12-000117	3 1/2" X 2" INSULATION	1.33
3	5-10-002754	MUFFLER LINER, 4 ID X 48' LG PERF. ALUM.	1 EA
4	5-10-002751	MUFFLER FRONT HEAD 8 5/8" DD X 4' ID	1 EA
5	5-10-002752	MUFFLER REAR HEAD 8 5/8" DD X 4' ID	1 EA
6	5-10-002753	MUFFLER LIFTING LUG	4 EA
7	2-35-000620	1/2" PLUG	1 EA
8	2-35-000614	1/2 HALF COUPLING	1 EA
9	1-10-000477	4" O.D. 16ga. SS TUBING X 3-3/4" LG.	.63 FT
10	-----	22ga. X 1/2" X 2 1/2" SS TAB	4 EA.

NOTES:

- SILENCER IS DESIGNED TO SUPPORT OWN WEIGHT ONLY.
- ALUMINUM LINER IS MADE OUT OF 2 PIECES. ONE 12' LONG THE OTHER 36' LONG. EACH PIECE IS WELDED AT THE ENDS AND THEN WELDED TOGETHER IN 3 PLACES
- INLET AND OUTLET PIECES EXTEND INTO THE MUFFLER 1/2" AND CAPTURE THE PERFORATED LINER. LINER OVERLAPS EACH END BY A MINIMUM OF 3/8".



INLET CAP
DRAWN 1/2X SCALE

OUTLET CAP
DRAWN 1/2X SCALE

LIFTING LUG
DRAWN 2X SCALE

TOLERANCE ± 1/8"

UNLESS OTHERWISE SPECIFIED:
DIMENSIONS ARE IN INCHES
FRACTIONS ON
TWO PLACE DECIMALS ± .01
THREE PLACE DECIMALS ± .005
ANGLES ± 2 DEG
SURFACE FINISH 250 MICROINCHES

The item shown in this drawing may be the property of Fulton Corporation or other patents of the Fulton Corporation. The corporation does not warrant the accuracy of the drawing without consent.



PULSE BOILERS
4' EXHAUST MUFFLER
ASSEMBLY DRAWING

DESIGNED BY	DATE	APPROVED BY	DATE
DIA.B.	12 DEC 1999	R.C.K.	04 JAN 2000
DRAWN BY	SCALE	SHEET NO.	OF 1
D	1 / 2	1	1

