

REVISIONS			1	
LTR	DESCRIPTION	CHECKED / DATE	APPROVAL / DATE	

ITEM	COMPONENT P/N	DESCRIPTION	QTY
1	PHW/750	PHW/750 HOT WATER PULSE BOILER (AGA APPROVED)	1 EA
2	PS4DR-0068	IDEAL FUEL CSD-1 GAS TRAIN	1 EA
3	P40DR-078	GAS METERING VALVE ASSEMBLY	1 EA
4	7-20-006000	EXHAUST BUTTERFLY VALVE & CONDENSATE DRAIN ASSEMBLY	1 EA

ITEM	CUSTOMER CONNECTION	SIZE	QTY
A	HOT WATER OUTLET	2" (51 mm)	1
B	EXHAUST OUTLET	4" (102 mm)	1
C	AIR INLET	4" (102 mm)	1
D	POWER INLET	7/8" (22 mm) Ø	2
E	CONDENSATE DRAIN (MALE)	3/4" (19 mm)	1
F	HOT WATER RETURN / DRAIN	2" (51 mm)	1
G	GAS INLET	1" (25 mm)	2

ITEM	MISC. CALLOUTS	SIZE	QTY
H	GAS DRIFT ACCESS	2 1/2" (64 mm)	1
J	CLEANOUT DRAINING	2" (51 mm)	3
K	CONTROLS ACCESS DOOR	N/A	1
L	POWER ON/OFF OR REMOTE/LOCAL SWITCH (GREEN)	N/A	1
M	LIFTING EYE	N/A	1
N	CALL FLIR HEAT LIGHT (GREEN)	N/A	1
P	LDV WATER ALARM LIGHT WITH RESET (RED)	N/A	1
R	FLAME FAILURE LIGHT (RED)	N/A	1
S	SPARK PLUG ACCESS	13/16" (21 mm)	1
T	HIGH LIMIT ADJUSTAT	1/2" (13 mm)	1
U	OPERATING ADJUSTAT	1/2" (13 mm)	1
V	LDV WATER PROBE	1/2" (13 mm)	1
W	ASME STAMPING AREA	N/A	1
Y	TEMPERATURE/PRESSURE GAUGE	1/2" (13 mm)	1
Z	HOT WATER SAFETY VALVE	3/4" x 1" (19 x 25 mm)	1


NOTES:

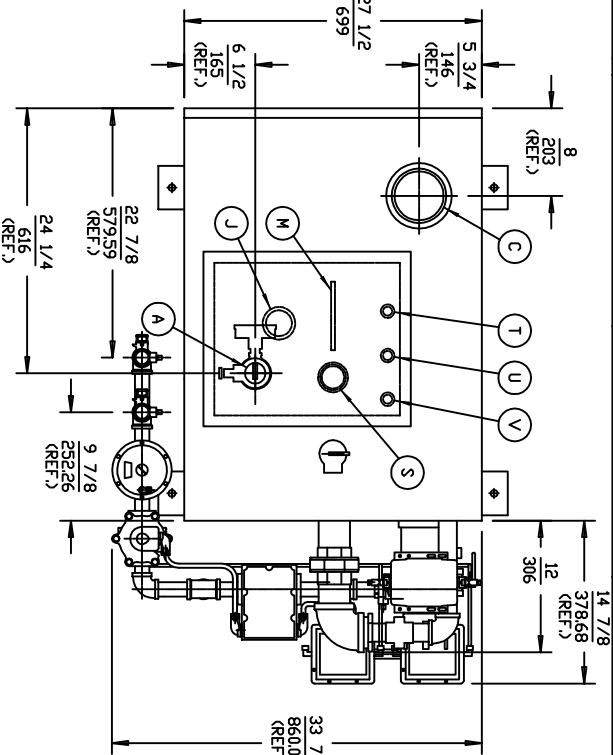
- 1 UNLESS OTHERWISE NOTED:
A ALL THREADED FITTINGS AND PIPE ARE N.P.T.
B ALL CUSTOMER CONNECTIONS ARE FEMALE
C HOT WATER OUTLET VALVE AND ALL PIPING AS DRAWN ARE BY OTHERS, (USER SUPPLIED COMPONENTS SHOWN FOR REFERENCE ONLY).
- 2 CONTROLS ACCESS DOOR REQUIRES A 28 INCH (711 mm) RADIUS SWING HINGED AT RIGHT SIDE OF FRONT PANEL. MINIMUM SIDE CLEARANCES ARE ONE INCH (25 mm) WHEN ANGLED FEET ARE REATTACHED INWARDS, AND GAS TRAIN IS REPIPED AT FIRST ELBOW DOWNSTREAM FROM INLET CONNECTION. REAR CLEARANCE MINIMUM IS 24 INCHES (610 mm).
- 3 THE 20" Ø x 51 1/2" (508 x 1308 mm) PRESSURE VESSEL CONTAINED WITHIN IS BUILT TO COMPLY WITH SERVICE RESTRICTIONS AS STATED IN ASME SECTION IV, PARAGRAPH HG-101.
- 4 POWER CONNECTION ALSO LOCATED SYMMETRICALLY ON OPPOSITE PANEL.

DIMENSIONS = _____ INCHES
MILLIMETERS

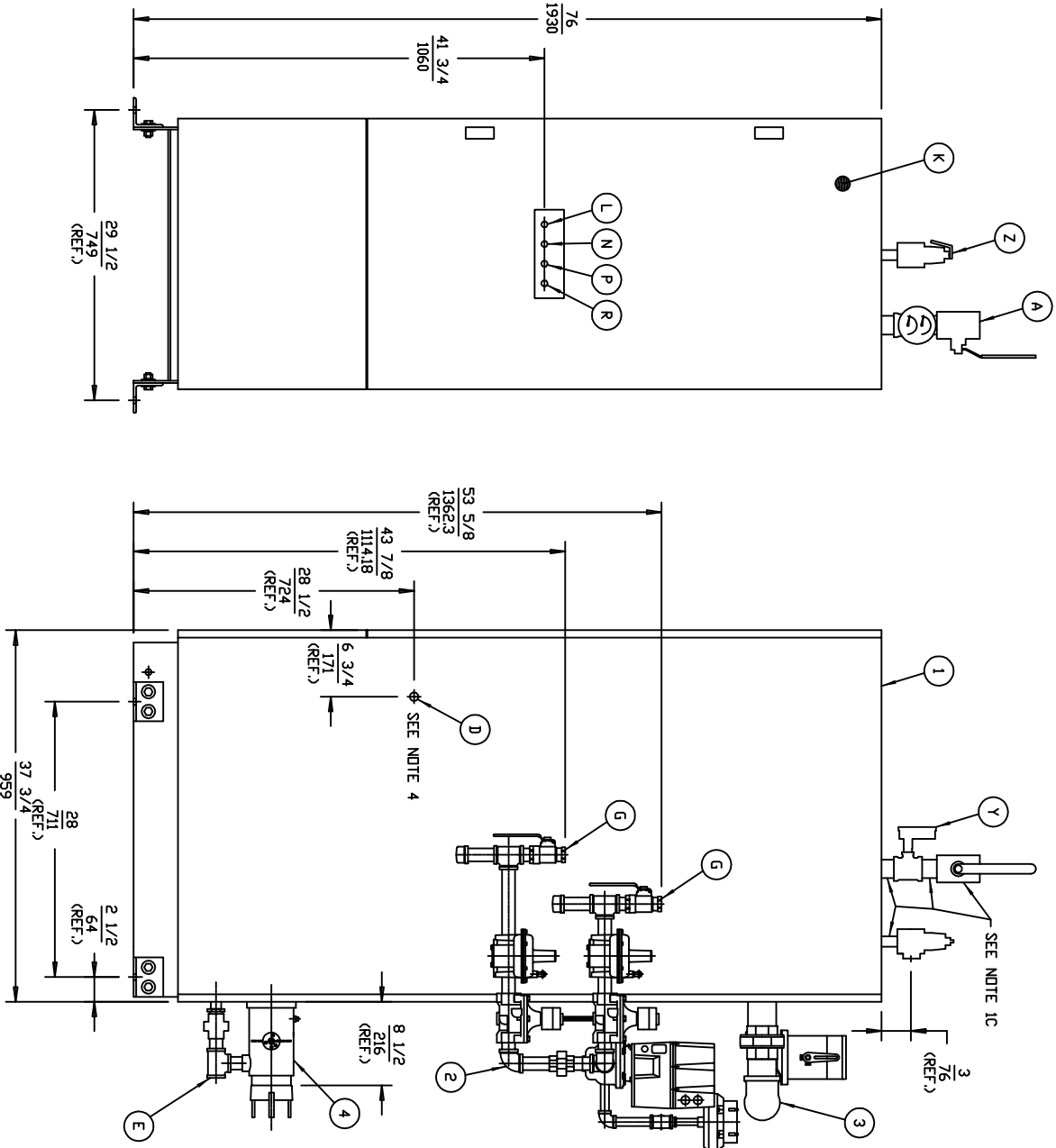
UNLESS OTHERWISE SPECIFIED:

DIMENSIONS ARE IN INCHES/MILLIMETERS
TOLERANCES ON
THREE PLACE DECIMALS ± .005
TWO PLACE DECIMALS ± .01
ANGLES ± 2 DEG
SURFACE FINISH 250 MICROINCHES

The item shown in this drawing may be generated by one or more patents of The Fulton Companies.		The Fulton Companies 9361 Port Street, Box 257 Pulaski, New York, USA 13142			
DATE	DESIGNED BY	DATE	CHKD BY	PHW/750 MODULATED HOT WATER PULSE BOILER WITH DUEL FUEL CSD1 GAS TRAIN	
01 JUNE 2000	J.S.L./R.J.F.	01 JUNE 2000	D		
DATE	APPROVED	DATE	SCALE	SHEET NO. 1 OF 1	
01 JUNE 2000	T. SARGENT	01 JUNE 2000	1/8	REV. -	

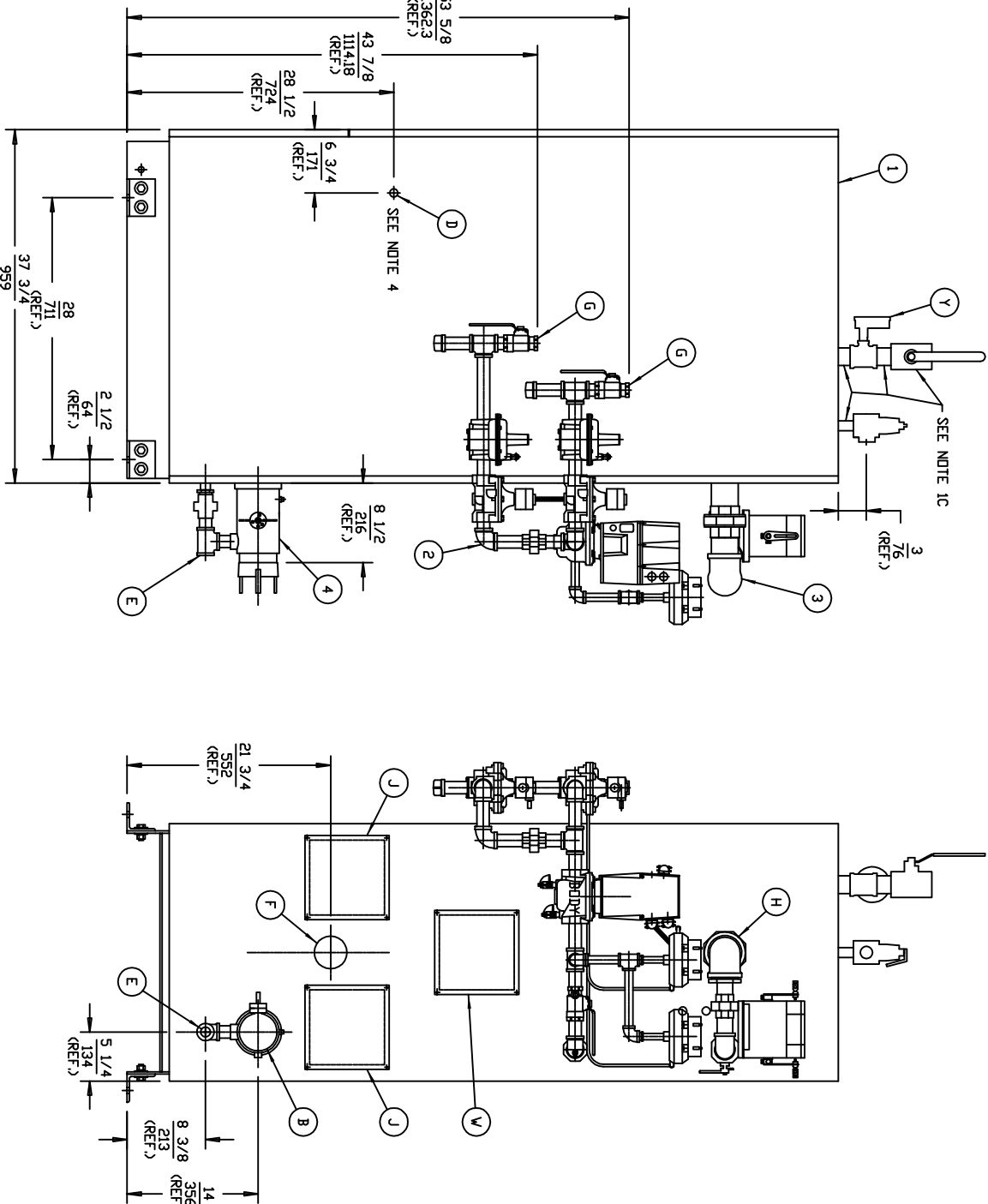


TOP VIEW

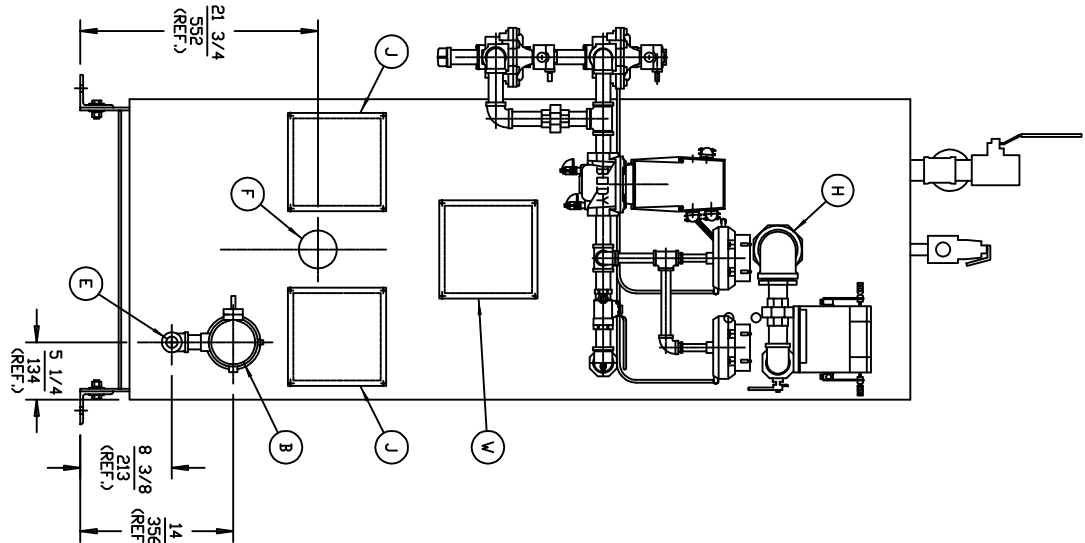


FRONT VIEW

(GAS TRAIN NOT SHOWN IN THIS VIEW FOR CLARITY)



RIGHT SIDE VIEW



BACK VIEW