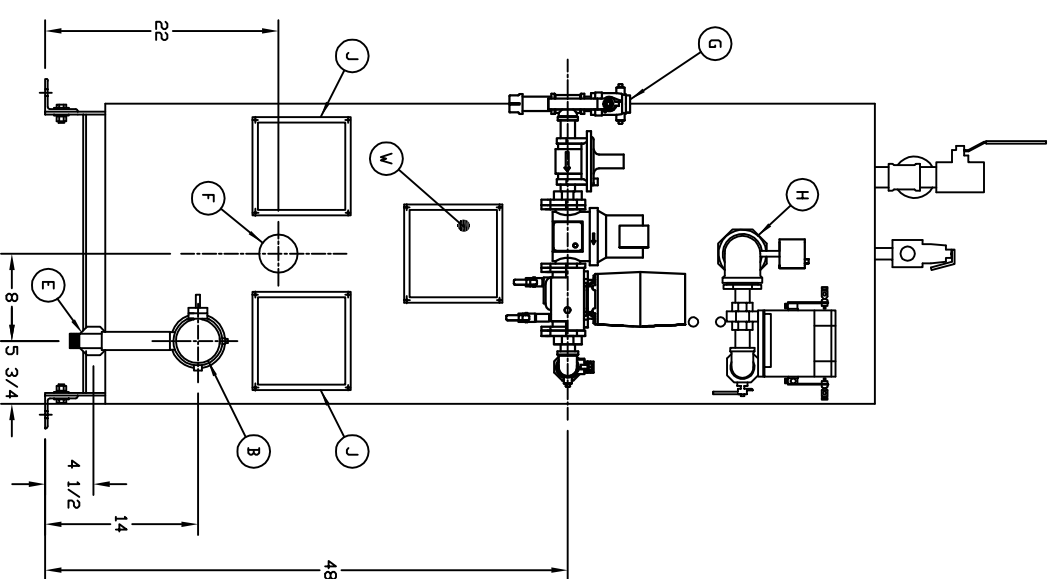
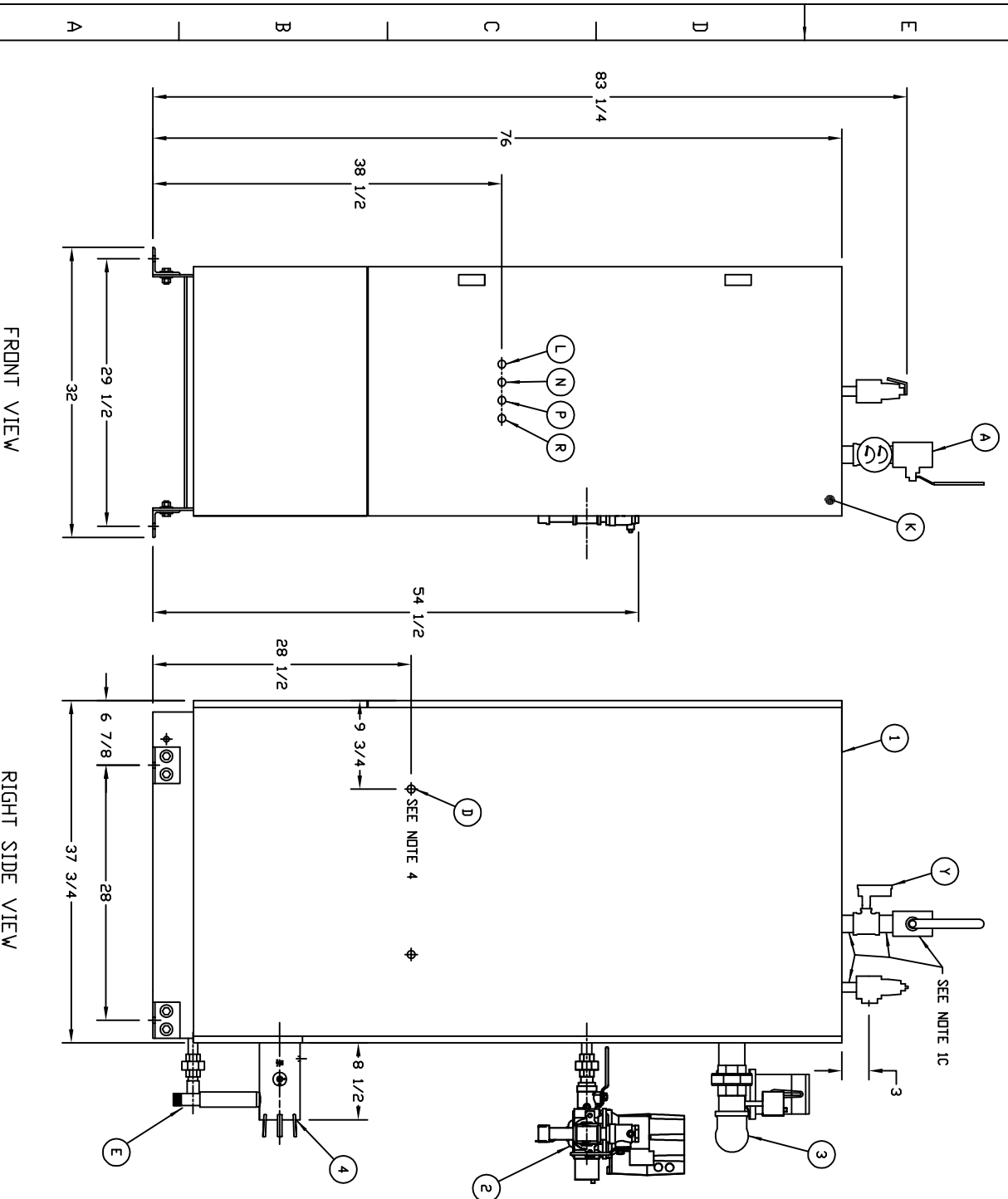
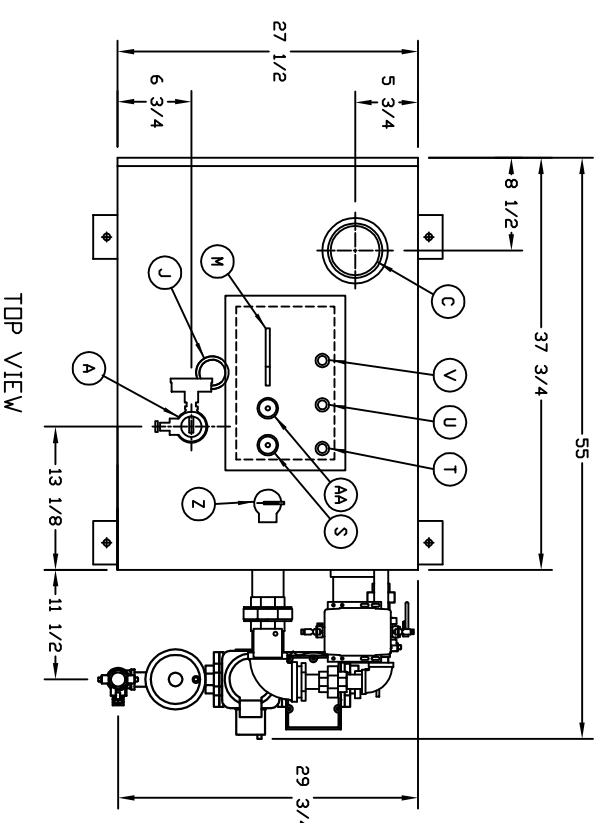


ITEM	COMPONENT P/N	DESCRIPTION	QTY
1	PHW 750K	PHW 750K HOT WATER PULSE BOILER	1 EA.
2	7-54-00256	GAS TRAIN (CSD-1 APPROVED)	1 EA.
3	PA0DR-0178	GAS METERING VALVE ASSEMBLY	1 EA.
4	7-20-005000	MODULATED EXHAUST BUTTERFLY VALVE ASSEMBLY	1 EA.

ITEM	DESCRIPTION	SIZE	QTY
A	CUSTOMER CONNECTION		
A	HOT WATER OUTLET	2" CSI (M)	1
B	EXHAUST OUTLET	4" (102 mm)	1
C	AIR INLET	4" (102 mm)	1
D	POWER INLET	7/8" (22 mm) Ø	2
E	CONDENSATE DRAIN (MALE)	3/4" (19 mm)	1
F	HOT WATER RETURN / DRAIN	2" CSI (M)	1
G	GAS INLET	1" (25 mm)	1

ITEM	MISC. CALLOUTS	SIZE	QTY
H	GAS DRIFFICE ACCESS	2 1/2" (64 mm)	1
J	CLEANOUT OPENING	2" CSI (M)	3
K	CONTROLS ACCESS DOOR	N/A	1
L	POWER ON/OFF OR REMOTE/LOCAL SWITCH (GREEN)	N/A	1
M	LIFTING EYE	N/A	1
N	CALL FOR HEAT LIGHT (GREEN)	N/A	1
P	LOW WATER ALARM LIGHT WITH RESET (RED)	N/A	1
R	FLAME FAILURE LIGHT (RED)	N/A	1
S	SPARK PLUG ACCESS	13/16" (21 mm)	1
T	HIGH LIMIT ADJUSTER	1/2" (13 mm)	1
U	OPERATING ADJUSTER	1/2" (13 mm)	1
V	LOW WATER PROBE	1/2" (13 mm)	1
V	ASME STAMPING AREA	N/A	1
Y	TEMPERATURE/PRESSURE GAUGE	1/2" (13 mm)	1
Z	HOT WATER SAFETY VALVE	3/4" x 1" (19 x 25 mm)	1
AA	FLAME ROD	13/16" (21 mm)	1



NOTES:

- UNLESS OTHERWISE NOTED:
 A. ALL THREADED FITTINGS AND PIPE ARE N.P.T.
 B. ALL CUSTOMER CONNECTIONS ARE FEMALE.
 C. HOT WATER OUTLET VALVE AND ALL PIPING AS DRAWN, ARE BY OTHERS, USER SUPPLIED COMPONENTS SHOWN FOR REFERENCE ONLY.
- CONTROL'S ACCESS DOOR REQUIRES A 28 INCH (711 mm) RADIUS SWING HINGED AT RIGHT SIDE OF FRONT PANEL. MINIMUM SIDE CLEARANCES ARE ONE INCH (25 mm) WHEN ANGLED. FEET ARE REATTACHED INWARDS, AND ALTERNATE GAS TRAIN IS USED. REAR CLEARANCE MINIMUM IS 24 INCHES (610 mm).
- THE 20" Ø x 51 1/2" (508 x 1308 mm) PRESSURE VESSEL CONTAINED WITHIN IS BUILT TO COMPLY WITH SERVICE RESTRICTIONS AS STATED IN ASME SECTION IV, PARAGRAPH HG-101.
- POWER CONNECTION ALSO LOCATED SYMMETRICALLY ON OPPOSITE PANEL.
- ALL DIMENSIONS ARE SHOWN FOR REFERENCE ONLY.

REV.	DESCRIPTION	DATE	BY	CHECKED	APPROVAL
E	UPDATED DIMENSIONS AND ADDED NOTE #5	7 APRIL 2010	J.S. LEVINS	BHP 7-19-11	TES 7-19-11
D	ADDED CAG SYMBOLS T.M.C. 12 SEPT 2009	7 APRIL 2010	N/A		

The item shown in this drawing is the property of The Fulton Companies. The design and drawing are the exclusive property of The Fulton Companies. The company does not permit their use without their prior written consent.

DIMENSIONS ARE IN INCHES (mm) UNLESS OTHERWISE SPECIFIED.
 TOLERANCES ARE:
 FRACTIONS: ± 1/16" (1.6mm)
 DECIMALS: ± 0.005" (0.127mm)
 HOLE DIMENSIONS: ± 0.005" (0.127mm) UNLESS OTHERWISE SPECIFIED.

PHW 750K MODULATED HOT WATER PULSE BOILER WITH CSD-1 GAS TRAIN
 P91DR-0200

