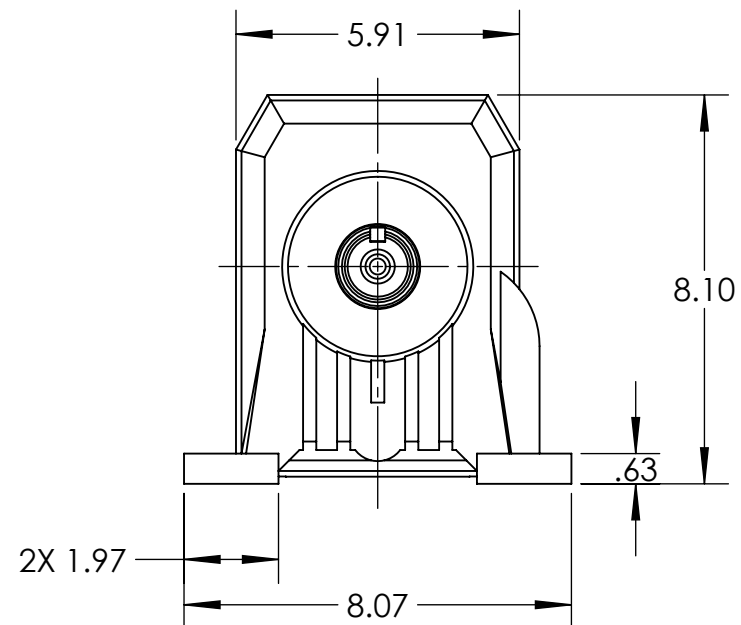
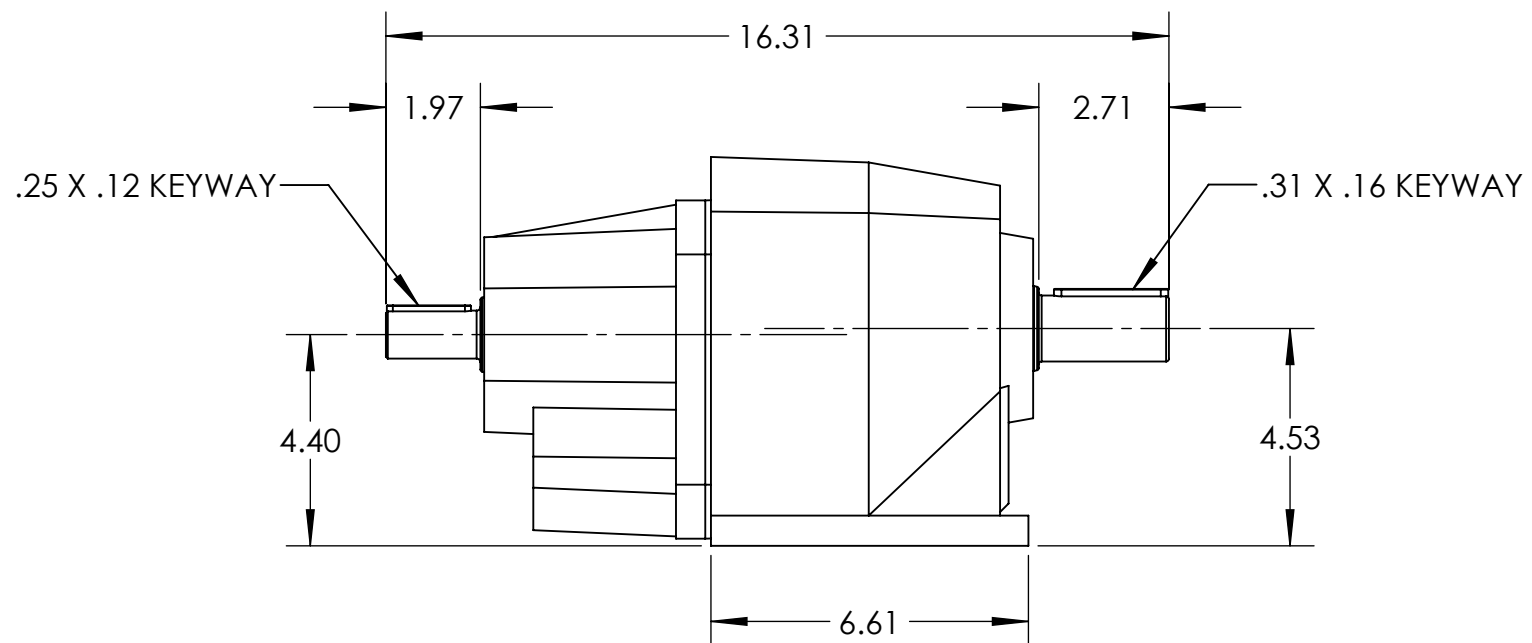
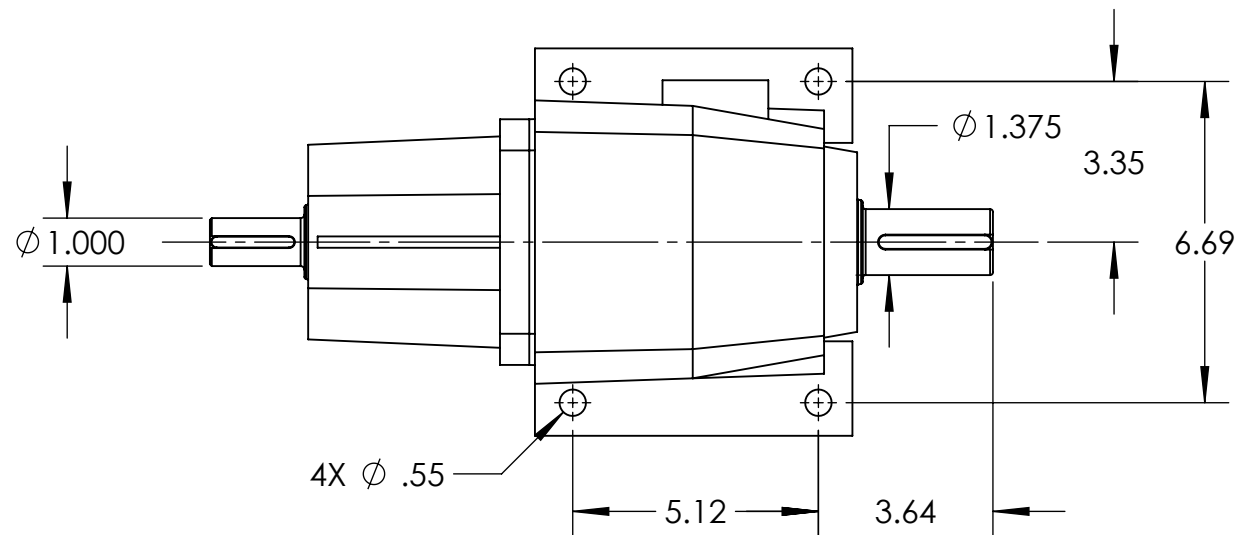


REVISIONS			
REV.	DESCRIPTION	ECN	DATE
A.0	1.DRAWING CREATED PER ECN	00410	5/6/2014



NOTES:
 1. INPUT SHAFT AND OUTPUT SHAFT CENTER HEIGHTS ARE DIFFERENT.

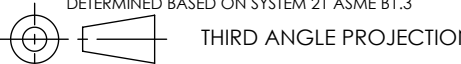
USE AND RELATED INFORMATION

MATERIAL: ES 11.999

WAS:

UNLESS OTHERWISE SPECIFIED
 DIMENSIONS ARE IN **INCHES**.
 INTERPRET DIM AND TOLERANCES PER VIKING PUMP ES-47
 BREAK EDGES .005-.015 RADIUS OR CHAMFER
 .XX $\pm .02$.XXX $\pm .005$ ANGLES $\pm 1^\circ$

ALL FINISHED SURFACES $\sqrt{250}$ (AA $\frac{.030}{\text{CUTOFF}}$)
 ACCEPTABILITY OF SCREW THREADS SHALL BE
 DETERMINED BASED ON SYSTEM 21 ASME B1.3



STATE	Released	05/06/2014
DRAWN	jpierce	5/6/2014
CHECKED	JAG	05/06/2014
PROJECT	3D	WEIGHT:
SCALE: 1:4		LBS
CASTING NUMBER		

VIKING PUMP
 VIKING PUMP, INC.
 A Unit of IDEX Corporation
 Cedar Falls, IA 50613 U.S.A.

THIS DRAWING IS THE PROPERTY OF VIKING PUMP, INC. AND IS PROPRIETARY IN GENERAL AND DETAIL. IT SHALL NOT BE COPIED OR ITS CONTENTS REVEALED TO OUTSIDE PARTIES WITHOUT THE WRITTEN CONSENT OF VIKING PUMP, INC.

SIZE 36 SOLID SHAFT INLINE REDUCER

SIZE DWG. NO.	SHEET 1 OF 1	REV
B 3-551-360-000-00		A.0